



# INSTALLATION MANUAL

INSTRUCTIONS ARE INTENDED FOR  
**PROFESSIONAL ROLLER DOOR  
INSTALLERS ONLY**

## **BEFORE YOU BEGIN**

PLEASE READ THESE INSTRUCTIONS COMPLETELY  
**DO NOT CUT STRAPS OR REMOVE PLASTIC  
WRAPPING UNTIL DOOR IS  
INSTALLED**

### **Contents**

#### **1.0 BEFORE YOU BEGIN**

**Pages 3-5**

- 1.1 Safety Checklist
- 1.2 Installation Requirements
- 1.3 Tools Check Lists

#### **2.0 INSTALLATION**

**Pages 6-8**

- 2.1 Installation of Brackets
- 2.2 Placing door onto Secured Brackets
- 2.3 Tensioning the Springs
- 2.4 Pinning the Door
- 2.5 Fixing the Tracks
- 2.6 Lock Fitting
- 2.7 Final Adjustments & Problem Solving

#### **3.0 AFTER INSTALLATION WARRANTY Pages 9**

## 1.0 Before You Begin

Please note: No Guarantee or warranty will be accepted by Australian Roller Doors if the door is not installed as per instructed. Please read the following instructions carefully.

### 1.1 Safety Checklist

Please ensure you know and follow these basic hazard controls below:

Reduce the risk of self harm

- Before commencing work tidy up the site making sure the work area is clear and safe.
- If the site can not be tidied or deemed to be unsafe do not install the door.
- Always remember the correct **lifting technique** when handling the Roller Door
- Wear appropriate **safety work wear** (gloves, boots, safety glasses, ear plugs etc)
- Check your equipment is in a safe and working position before using.

Reduce the risk of other people

- Keep all people clear of working area with appropriate signs.
- Ensure no-one ever walks under a door sitting on a bracket

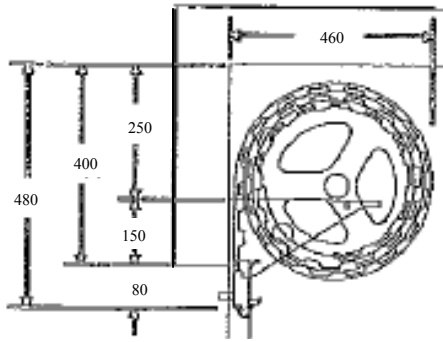
### 1.2 Installation Requirements

**Note:** All references are taken from the inside looking out.

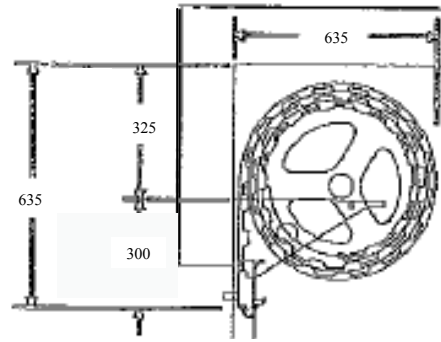
The Australian Roller Door is designed to be fitted behind the opening to a structurally sound, smooth flat surface. Check to see you have sufficient clearances above, either side and back from the opening as per the information in this manual. It is critical the door be installed level and plum. Make all measurements and allowances with this in mind.

#### Headroom

This is the space above the opening (or lintel) where the roll of the door goes. Note the door will protrude below the lintel to allow for the handle. If there is insufficient headroom, the door can be lowered but the walk through height will be correspondingly lower.



NORMAL HEADROOM  
Up to 2350mm High  
Series A & AA Doors



NORMAL HEADROOM  
Up to 5100mm High  
Series B Doors

### Opening Height

The Australian Roller Door will fit any opening height up to that marked on the door, (any excess door height can stay on the roll and must be pinned).

### Opening Width

The opening should be 50mm narrower (A Series) or 120mm (B Series) than the door width marked on the door tag (25mm overlap per side). A wider door can be fitted provided sufficient additional side room and fixing material are available. If the door is too narrow the opening will need to be reduced by the fitting of jambs.

### Level & Plumb

The door must be installed in an level position. If the opening is not level and square the appearance and sideroom requirements will be affected. Where jambs are out of plumb, modifications may be required to allow the door guides to stand back from the opening edge. The floor should be level or recessed across the opening to avoid any gaps.

### Structure Suitability

Ensure the opening is strong enough to support the door.

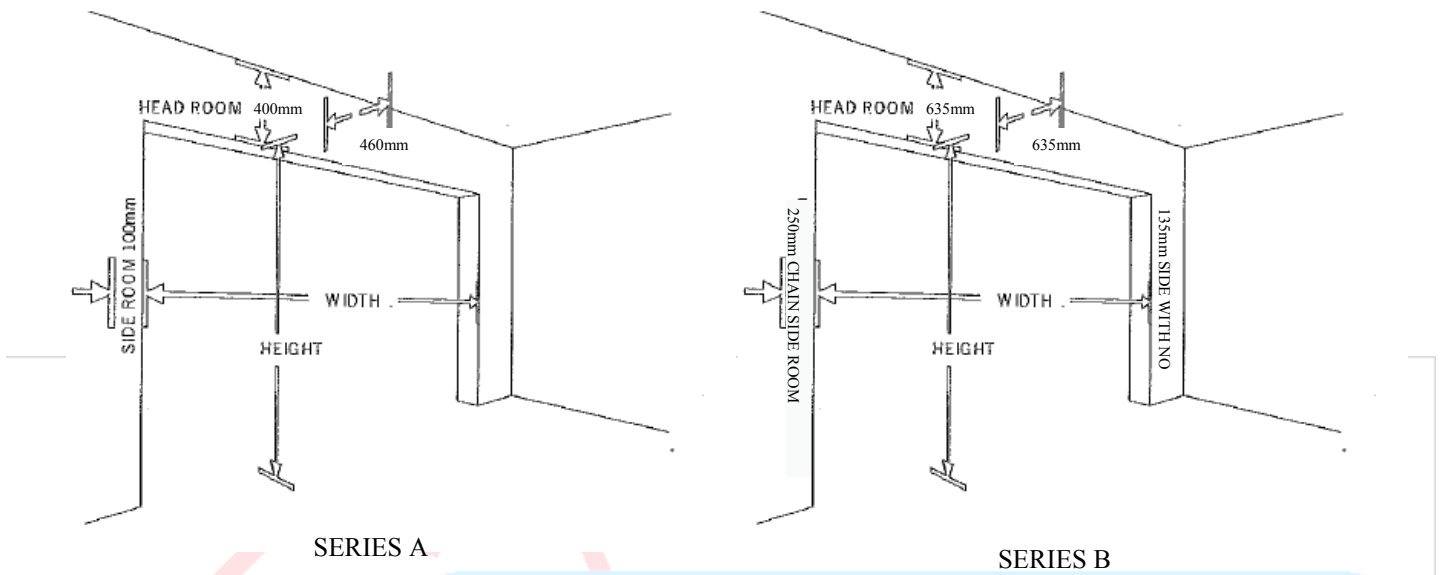
### Sideroom

A minimum of 75-100mm of sideroom (A Series) or 150mm (AA Series) is required behind the opening and should extend above the head to allow for the bracket to be fixed. Sideroom on one side of 120mm will be required if a automatic opener is to be fitted now or in the future or 250mm planetary gear.

The roller door must be correctly installed as per instructions or the warranty may be void. Ensure the walls around the opening upon which the product is to be fixed is structurally sound. If floors and walls are not level, alteration will have to be made.

### Backroom

The roll of the door will protrude back for the surface, it is approximately 450mm.



### 1.3 Tools Check List

The tools required to install the door correctly are:

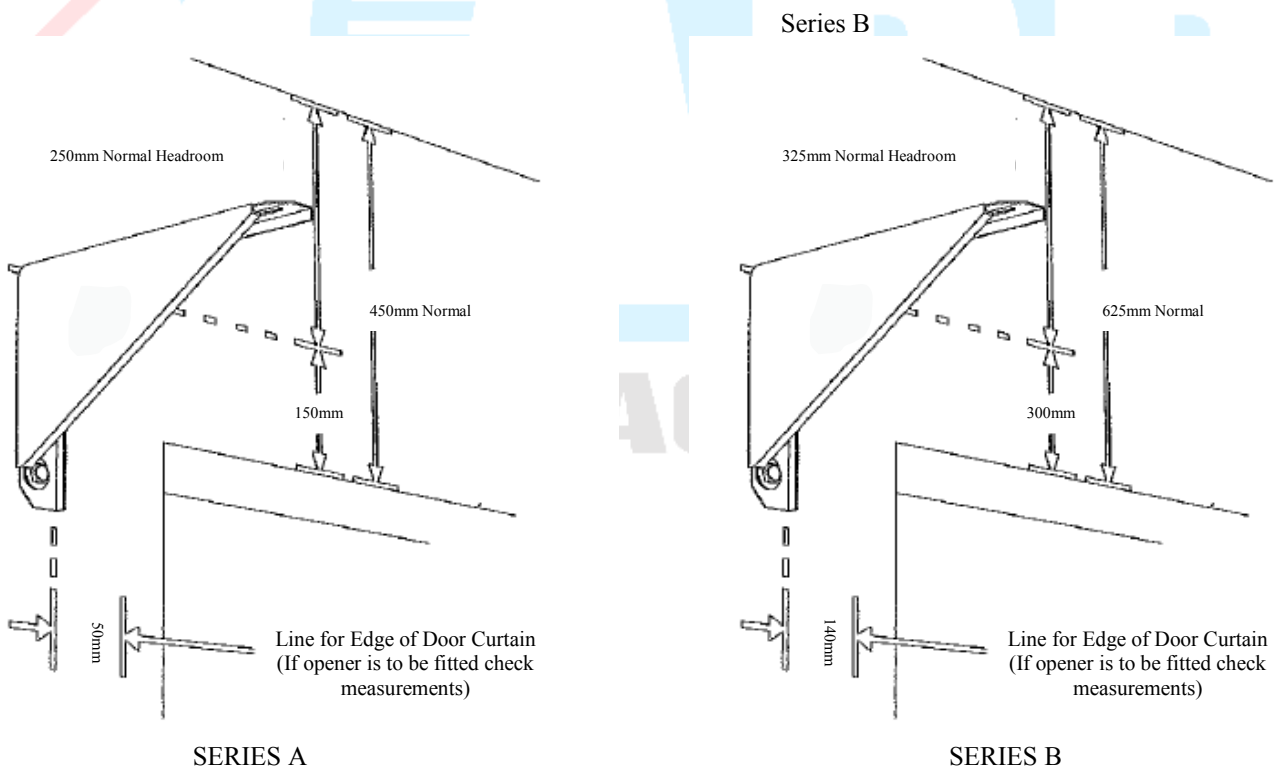
- Laser Level
- 400mm softwood chock
- Phillips head screw driver
- 2 stepladders
- Hacksaw
- File
- 450mm (18") pipe wrench
- Marking pen
- Stanley knife
- Spirit level
- Socket wrench
- Power drill & drill bits

## 2.0 Installation

### 2.1 Installation of Brackets

- A. Measure and mark the door width evenly each side of opening.
- B. Add a minimum of 50mm to this mark to determine the inside line of the bracket.
- C. **Normal Headroom** (480mm for doors up to 2350mm high, 635mm for doors over 2350mm high) Measure up 150mm from underside of the head. If the head is not level, measure up from the lowest side first.
- D. Hold the bracket to the position marked, mark three hole positions with one hole to top of bracket. Drill the holes and bolt the bracket into position using the fasteners supplied.
- E. Using a laser level (or straight edge and spirit level) mark the height of the second bracket. To ensure greatest accuracy, use laser level at the top of the brackets at end away from the wall.

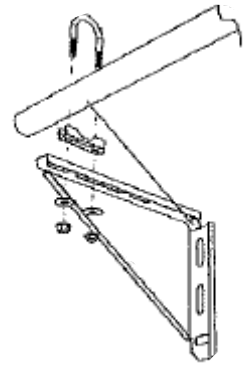
**Note:** Brackets must be perfectly level for the door to operate.



### 2.2 Placing the door onto the secured brackets.

- A. **Before lifting the door**, ensure that the axle is not too long. Before measuring, rotate the axle by hand quarter of a turn in either direction and let it spring back a couple of times to centralise it. Mark the axle next to door curtain and compare to door width marks on wall to any obstruction. Cut excess axle if required.

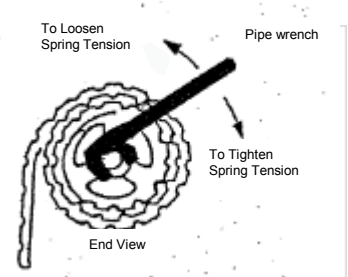
- B. With the help of a friend and using safe lifting techniques, lift the door onto brackets the right way around so that the door will roll down the front—or wall side. Loosely fit the saddle, U bolts, nuts, washers and keepers (in last 2 slots for up to 2350 high door). Centre the door with the opening ensuring the axle marks next to drum still line up.



### 2.3 Tensioning the Springs

- A. Tighten U Bolts, then rotate the door two (2) complete turns (the top of the door towards the wall) hold the door firmly while your friend cuts the plastic straps taking care not to damage the roller door.

**Note: GUIDE ONLY, number of rotations varies according to door size.**



### 2.4 Pinning the Door

- A. All doors that have excess door curtain must be pinned by using 45mm or 55mm teks in the 1<sup>st</sup> and 3<sup>rd</sup> ribs back from the first rib that touches the drum when door is down.

**Note: This reduces the chances of the door conning and also stops doors from being lifted back over itself and prevents break-ins. Screws should be placed when the door is pulled down for the**



### 2.5 Fixing the Tracks

- A. Check that the curtain overlaps equally on both sides. Check the tracks are the correct length (standard headroom 50mm above the top of the bracket). *If over length cut from the bottom only.*
- B. Slide the track over the edge of the curtain allowing 2mm clearance for final adjustment. Fix the tracks to wall using fixing through the track for “A” Series and Cleats for “AA” and the fasteners supplied. Make sure the tracks are perfectly plumb. The top lug should be near the bottom of the door brackets, the bottom fastener within 150mm of the floor and evenly spaced between these with a maximum spacing of 500mm.



## 2.6 Lock Fitting

- A. Separate the door lock from cover plate. You will notice two hooks on the right-hand side of lock, hook them over the edge of the curtain and push back into hole for lock. Go to rear of door and screw the lock to the cover plate. When this is completed, slide lock bar through the recess in the door curtain and fix to lock bars with screws provided in kit bag.
- B. When you have completed this, all that is required is to drill 2 holes into the door tracks to take the lock bars. This is done when door is fully closed. Mark where bars meet the tracks and drill out a rectangular slot no wider than 10mm and no longer than 25mm. Ensure that the top of the slot remains in line with the top off the locking bar. Allow for a little movement around slot size, this will assist locking the door with the keys.

## 2.7 Final Adjustments & Problem Solving

If the door is hard to operate

Do not apply grease or oil to the door guides. Silicone Spray only check the door is not jamming on the sides of the tracks. Check the tracks are plumb and have clearance. If not– then adjust.

If the door is hard to lift or lower

Adjust the spring tension to add more lift to the door (door will tend to drop) or adjust the spring tension to decrease lift to the door (door will tend to rise.) .

If so, adjust using a pipe wrench. Use pipe wrench when you need to hold against tension before you loosen U Bolts. Add tension by direction of opening door. Decrease tension by direction of closing door. When complete, tighten U Bolts. Be careful not to let the Pipe wrench slip, you may receive a severe blow, we recommend that a qualified installer to do such maintenance work.

If the door isn't parallel or if it rolls up or telescopes

Check to see the brackets are level with each other or check to see if the U bolts are fixed in the same holes and both sides are parallel to front opening or check if side tracks are square or twisted.



## 3.0 After Installation Warranty

1. **Roller Doors (domestic) to be free from defects in material and workmanship for a period on twelve (12) months from the date of purchase.**
2. **Industrial Roller Doors to be free from defects in material and workmanship for a period on six (6) months from the date of purchase.**
  - A. **While colorbond is long lasting, hardwearing, peel, flake and chip resistant, under normal conditions this warranty does not extend to inherent defects in steel or other material used in the manufacture or to the colorbond process applies.**
  - B. **From the date of purchase, providing that the installation was correctly performed and the appropriate care and services have been performed by the purchaser, the manufactures obligations under the Warranty are limited to rectify and such defect in material and workmanship in a manner that is considered reasonable by the manufacturer and including if required the use of touch up paint to the surface coat.**
3. **While BlueScope Limited is our preferred supplier, steel products from other sources may also be used.**
4. **Proof of purchase must be sighted by the manufacturer at the time of Warranty claim.**
5. **Clear access must be provided to drum, operator, track and lifting equipment to enable our representatives to conduct quote/warranty work.**
6. **Claims in respect to the Warranty for any defect, loss or damage and Australian Roller Doors reserve the right to reject any warranty claims outside of this period.**
7. **The manufacturer reserves the right to modify any existing or future products without incurring and obligation to incorporate such modification to product already manufactured or to which this warranty relate.**
8. **Australian Roller Doors reserved the right to touch up on site Colorbond and or Pre-Painted surfaces on its range of Roller Doors but no responsibility will be taken for the possibility of any paint rubs, scuffing etc on the internal wash coat finish or external painted surfaces.**
9. **This Warranty does not apply to any defect, loss or damage arising or caused directly or indirectly by or as a result of:**
  - A. **Any masonry rendered or other surfaced cracking of collapsing during installation of the door.**
  - B. **Any defect or deterioration of timber including drying out after installation.**
  - C. **Any weakening or collapse of the structure to which the doors are affixed occurring any time after installation.**
  - D. **Any damage to or deterioration in the condition of the doors occurring after delivery and prior to installation.**

- E. Any defect (Including defects in component parts or accessories) arising from or attributable to the failure to carry out normal preventive maintenance or adjustment.**
  - F. Any additional defect damage or deterioration arising from or attributable to the operation of the door after it is known to be defective.**
  - G. Any Roller Door being installed within 800 meters of the sea or other body of water equivalent or greater salt concentration of in any subject to industrial fall out or the use of incorrect cleaning material (acid wash) on the door or adjacent area.**
- 10. Exclusion to the Warranty period:**
- A. Key and Barrel—Twelve (12) month Warranty**
  - B. Spring Tensions—Three (3) month Warranty**
- 11. All Warranties will be voided subjects to:**
- A. Water damage and condensation**
  - B. Power supply black out or surge**
  - C. Door blowing in, storm damage or any act or God**
  - D. Modification of Adjustment by unauthorised persons**
  - E. Account not paid in full by the purchaser**
  - F. Preventive maintenance and regular servicing by experienced door installer**
- 12. Warranty only applies to Roller Doors purchased and installed in Australia.**
- 13. Any dispute or proceedings in the respect of this Warranty are to be determined in the State of Queensland according to the Laws of the State of Queensland.**

**GARAGE DOORS**